



VOLITOTM

presentation Broiler breeder Houses





VOLITOTM

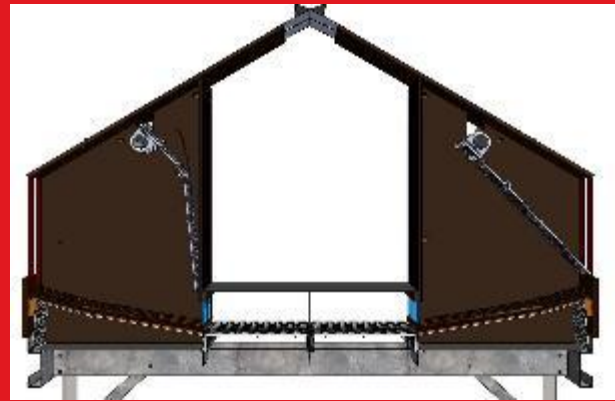
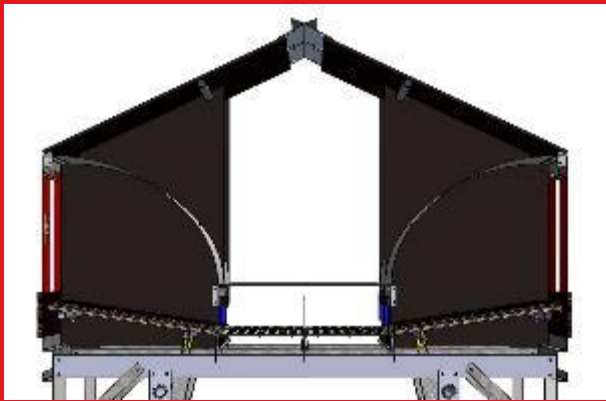
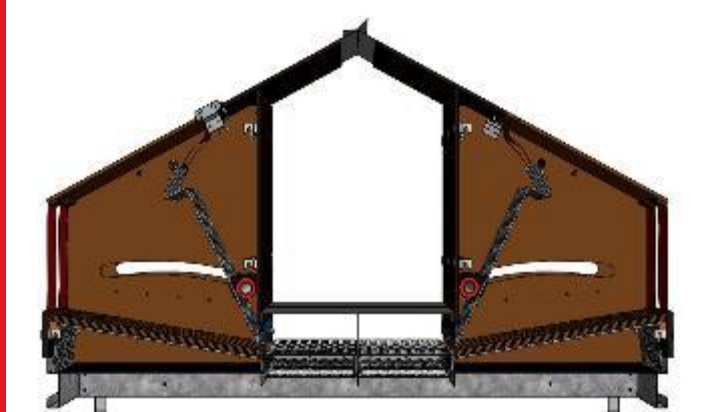
Valego laying nests

- Broiler breeders
- Layer breeders
- Commercial layers in Aviary





Volito Valego nest in 3 Types

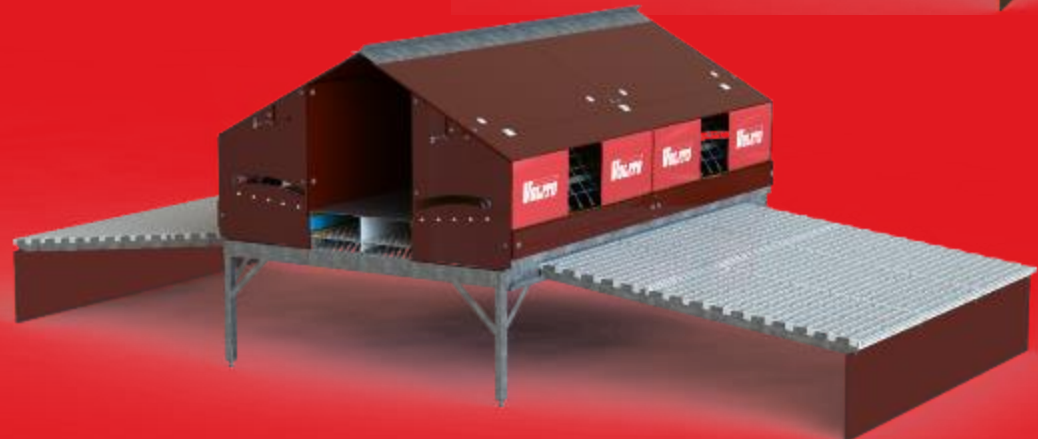


Chore-Time is a division of CTB, Inc.



VOLITOTM

Volito nest systems range

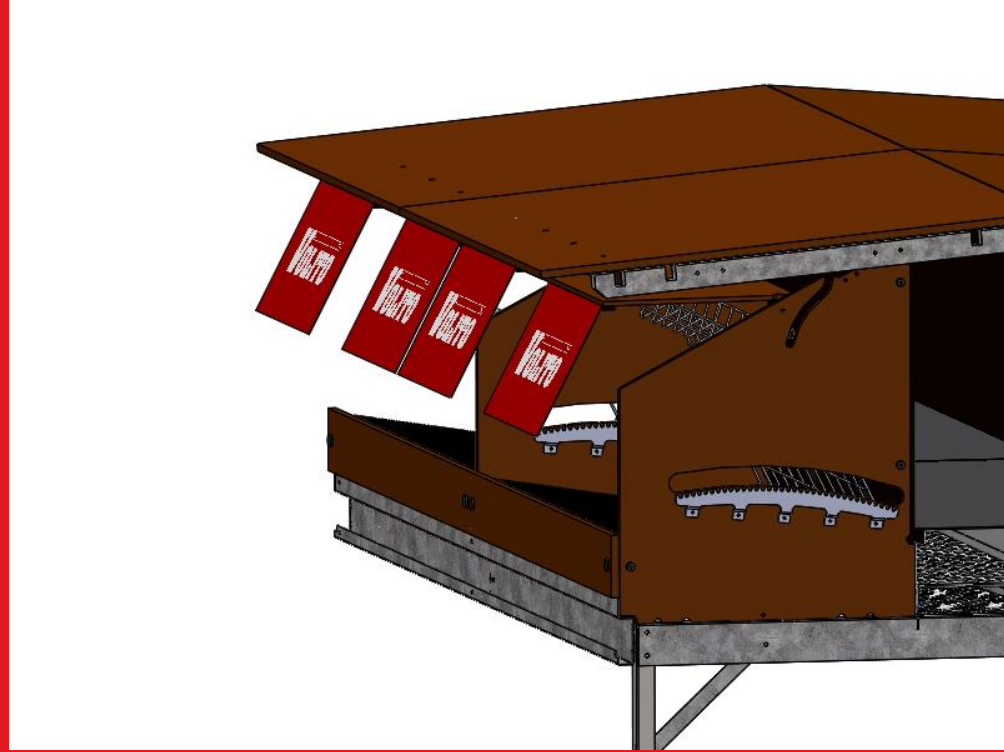


Chore-Time is a division of CTB, Inc.



VOLITOTM

Flat-top



Chore-Time is a division of CTB, Inc.



VOLITOTM

Flat-top



Chore-Time is a division of CTB, Inc.



VOLITOTM

TDE-Nest System, Surface

- TDE-43 1185x445mm, 2.11m² ,1section
- TDE-49 1185x500mm, 2.37m² ,1section





VOLITOTM

RDE-Nest System,surface

- RDE-49 1185x500mm, 2.37m² ,1section
- RDE-58 1185x580mm, 2.75m² ,1section





VOLITOTM

MFE-Nest System,surface

- MFE-52 1185x520mm, 2.46m² , 1section





Details RDE-49 nest

- Superior nest system for breeders and commercial layers; floor and aviary
-





VOLITOTM

Details RDE-49 nest

- Nest leg stainless steel with adjustable screw



Chore-Time is a division of CTB, Inc.



VOLITOTM

Details RDE-49 nest

Rack drive expulsion system





VOLITOTM

Details RDE-49 nest

- Safe-strong-accurate Rack drive expulsion system.... always open and close in the same place.... impossible to openen.





VOLITOTM

Details RDE-49 nest



Chore-Time is a division of CTB, Inc.



VOLITOTM

Details RDE-49 nest

- Astroturf nest mat, for clean eggs





VOLITOTM

Details RDE-49 nest

Easy construction





VOLITOTM

Details RDE-49 nest

- Quick installation with click and fix connection





VOLITOTM

Details RDE-49 nest

- PP bottom for AstroTurf, To avoid draft inside the nests. Plastic. Removable.

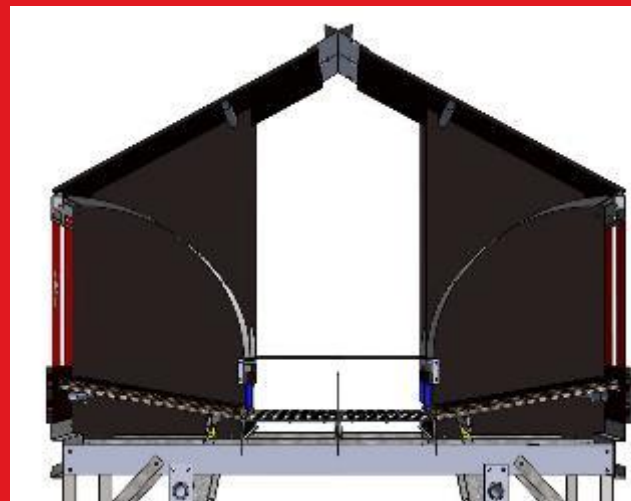




VOLITOTM

Details RDE-49 nest

- with a RDE- expulsion wire always air in the nests.



Chore-Time is a division of CTB, Inc.



VOLITOTM

Details RDE-49 nest

- NEW!! design roofplates, with hings for easy inspection. Less hand work.

NEW



OLD





VOLITOTM

Details RDE-49 nest

- Entry Nest height 28.5 cm > colleagues 23/25 cm. this is important for large Broiler Breeders





Details RDE-49 nest

- Film faced plywood walls/ nests-waterproof plates
- Less noisy
- Genetically birds find wood more attractive
- Saw-cuttings double coated
- Climate control inside the nest better
- 15mm and 9mm





VOLITOTM

Details RDE-49 nest

- Egg belt in various types
- Egg-belt 250mm. / 500mm. Perforated Polypropylene.
- Egg-belt 250mm. Woven.





DETAILS RDE-49 nets

- Egg collection





VOLITOTM

Details RDE-49 nest

- **Volito Polypropylene Slats**
- **Slat size:**
 - 980x625mm=0.6125m²
 - polypropylene, UV protected
 - mesh size 40x22mm



Chore-Time is a division of CTB, Inc.



VOLITOTM

Details RDE-49 nest

- following widths are possible:
- 980 – 1460 – 1960 – 2440 – 2940 – 3420 – 4400 – 4900mm.
-





Details RDE-49 nest

- Steel flat bar

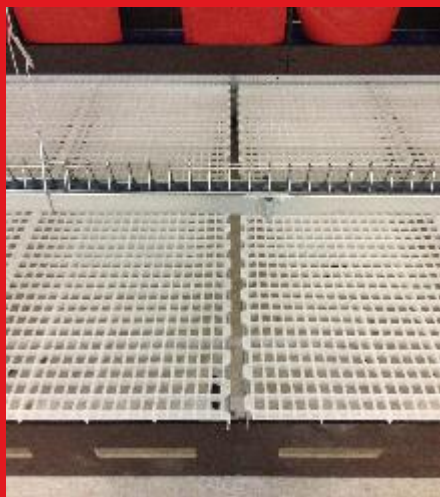




VOLITOTM

Details RDE-49 nest

- Front closure 1 perfo row or closed different heights





VOLITOTM

Details RDE-49 nest

- **Volito Hardwood Slats**

- **Hardwood slats**

- durable, robust hardwood
- mesh size between slats 26mm
- fixed using stainless steel nails

- **Slat size:**

- 1200x1000mm

- Hard wood is not in stock !!!!!!! deliveries are difficult





VOLITOTM

How to design a broiler-breeder House

After personal experience and success !!!

*After ca.17 meters wide, 2 nest rows.

*It is important that the walking distances are not too big.





VOLITOTM

distances and nests

- The chickens should not walk more than 5/6 meters.
- The nest systems must be easily accessible to the hens
- Front height slats may not exceed 450/500 mm.
- The feed and water must fit well on the slats. this is how you attract the hens to the nest





VOLITOTM

distances and nests

- Distance from the waterline to the nest about 60 cm.
- Distance from the first line of feed to the water line 60 cm.
- And the next feedline also 60 cm.
- There must also be space enough to jump on the slats.

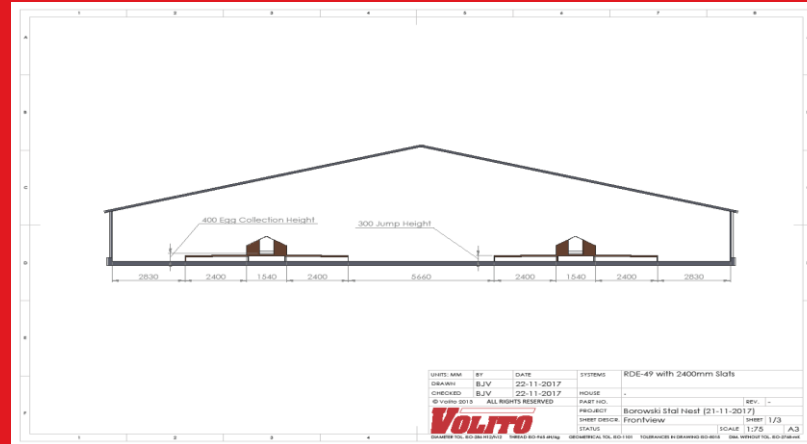




VOLITOTM

Advice Slats surface

- The best is around the 66% slats area
- Space for feed and water system on the slats
- A lot of slat space helps that the birds have clean legs. (Clean eggs)





Advice slats surface

Results from Dutch Applied Poultry Research Center
laying period (22 to 58 weeks)

	Delden (hand gathered nest)		Jansen nest	
• Nest material	Shavings		Astro-turf	
• Slat area	66%	33%	66%	33%
• % Floor eggs	0.8	1.3	1.2	3.5
• % Dirty NEST egg	3.1	5.8	1.9	3.3





VOLITOTM

Advice slats surface

- The best thing is that all birds sleep on the slats.

When they wake up, they can easily eating and drinking. So can she start fit on her working the day.





VOLITOTM

Advice slats surface

- With a wide slat more space for the manure





VOLITOTM

what is your advice Small slats or wide slats ??

- What is your experience with narrow slats ??





VOLITOTM

The litter in the Litter area does not exceed 1 to 2 cm.



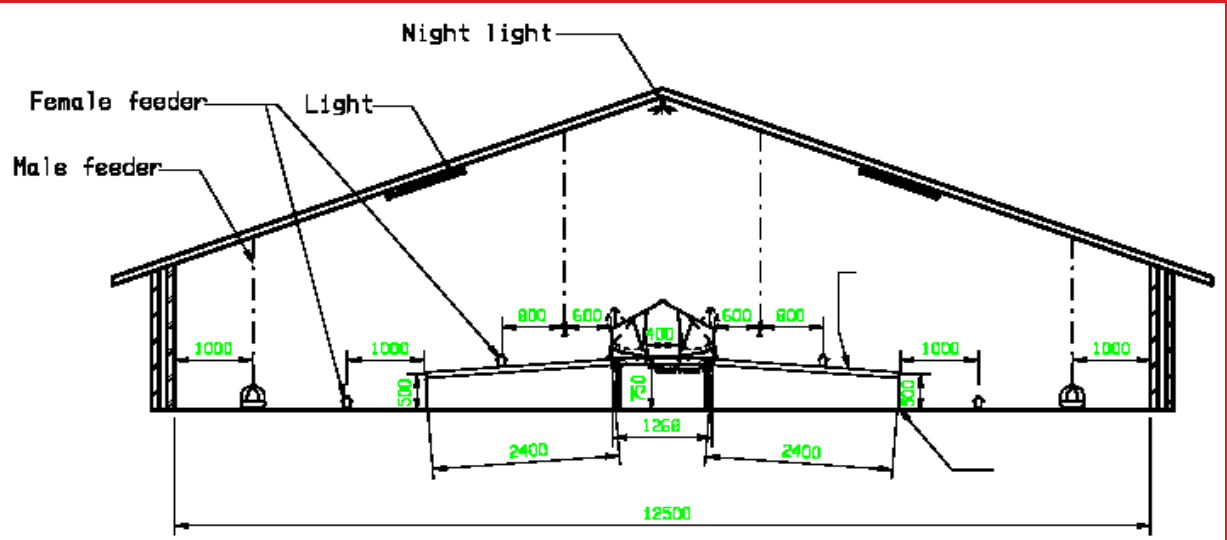
Chore-Time is a division of CTB, Inc.



VOLITOTM

lighting

- The lighting should be placed in such a way that you do not have any shadow in your litter area.





VOLITOTM

Lighting

- Narrow walkover/extension 1200mm. provide ground eggs. few light !
- Few light in corners provide ground eggs





VOLITOTM

lighting

- Nest open 1 hour before the lighting switches on.
- the light intensity must be at least 50 lux at the level of the chickens. (always follow the advice of the breeding organization)
- high-frequency TL-lighting
- color warm white





VOLITOTM

Feeding time

- Never feed in the laying period. you attract the hens out the nests

- laying period is about 2 hours after the light goes on





VOLITOTM

Floor eggs

- Preventing floor eggs eggs. Why?!?
- 1e.. about 35% of the floor eggs will be lost. Hair cracks, dirty, eating ect.
- 2e..Hens who see floor eggs will also do this.(copy behavior)
- 3e.. with floor eggs you have less outcome. 1 chick more per hen extra is a lot of money by 10.000 hens





VOLITOTM

Important tips to prevent flooreggs

- In the beginning period every hour passes through the chickens so that the chickens keep moving, that they do not sit down. So they go looking for a quiet place. (nest)
- In the beginning period collected all the floor eggs , 6 times a day
- Make sure the animals are healthy, healthy hens walk easier to the nest.





VOLITOTM

Important tips to prevent flooreggs

- Closes attractive nesting places. Below feeding machines etc.
- Good temperature, no draft, big slats, no shadow ect. help to prevent flooreggs
- Good preparation for the arrival of new hens





VOLITOTM

Main Objective

Most efficient production to get the maximum amount of first class hatching eggs





VOLITOTM

Thank you

ευχαριστώ Salamat Po متشكراً شكراً Grazie

благодаря ありがとうございます Kiitos Teşekkürler 谢谢

ขอบคุณครับ Obrigado شكریه дякую Dziękuję

Hvala Köszönöm Dank u Wel Terima Kasih Tack

Mulțumesc спасибо Danke Cám ơn Gracias

多謝晒 Ďakujem Tak நன்றி Dėkuji 감사합니다

