

COUNTER ROTATING PRIMARY PICKER MODELS SCP & SCT

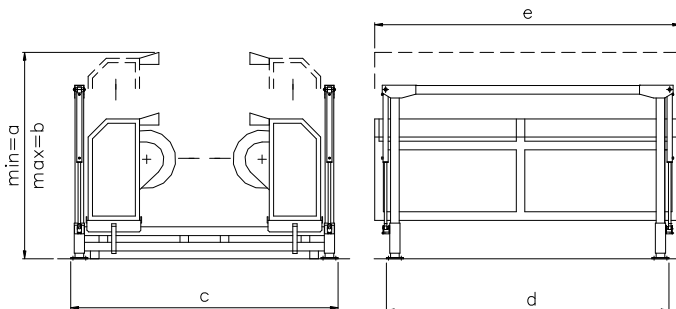
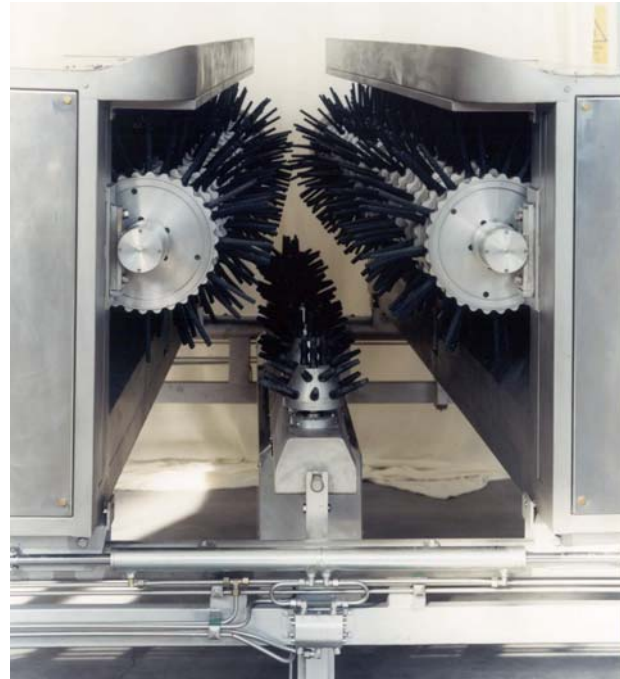
This counter-rotating picker is made entirely of stainless steel and other anticorrosion materials.

It can process chicken, turkey and duck. With three different models available, it can pick even the fastest of line speeds.

The counter-rotation of the side banks is obtained with rubber and aluminium gears. The rubber gears insure excellent adhesion, a reduction of noise, and lower maintenance costs compared to gearboxes.

The counter-rotating side banks are fully adjustable in height & width to fully cover the birds.

The **Counter-Rotating "Attack" Picker** will reduce labor and maintenance costs on your picking lines.



TECHNICAL SPECIFICATION: (in inches)

| MODEL | 1-210 | 2-350 | 3-350 |
|-------|-------|--------|--------|
| a | 65.70 | 71.65 | 71.65 |
| b | 79.52 | 94.48 | 94.48 |
| c | 82.67 | 129.92 | 129.92 |
| d | 58.26 | 80.70 | 129.92 |
| e | 65.74 | 90.55 | 140.55 |

Electric Motors Installed on different machine models:

- **SCP 1/210:** (2) 3hp motors
(2) 4hp motors
- **SCP 3/350:** (2) 10hp motors
(2) 15hp motors

- **SCP 2/350:** (2) 7.5hp motors
(2) 10hp motors
- **SCT 3/350:** (2) 15hp motors
(2) 20hp motors

- **Bottom bank *on all machines** (3) 4hp motors

- **Hydraulic motor on *all machines** (1) ¾hp motor

Feather disposal

The feather disposal is carried out using a raceway in the floor with water.

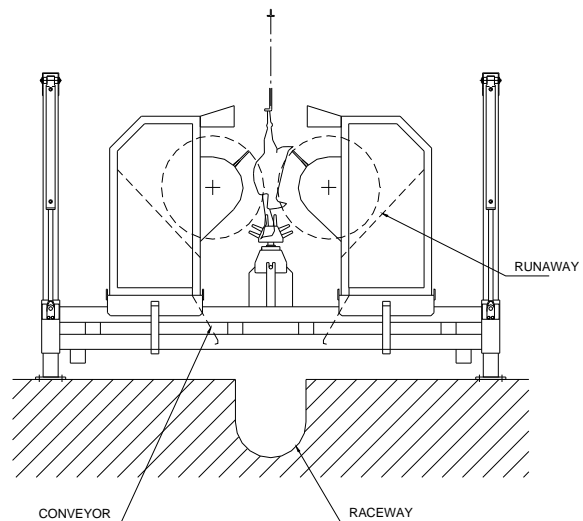
The machine is equipped with runaways, which direct the feathers towards the raceway.

Advantages

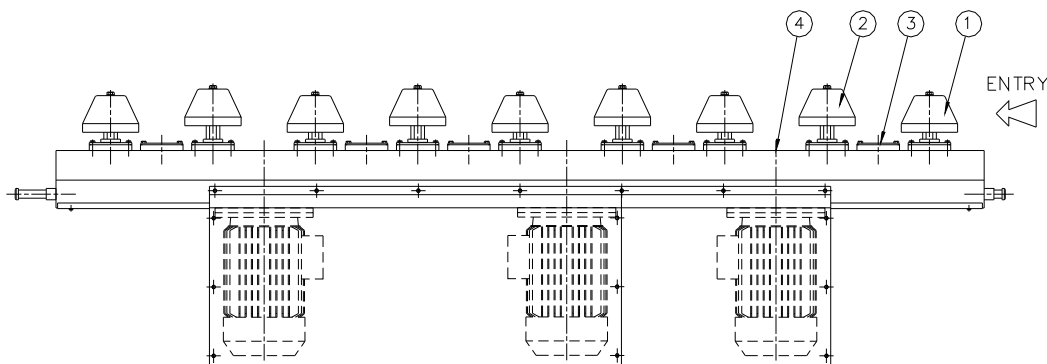
Large diameter side banks allow for better coverage of the bird. On the side bank about every 3-inch section of fingers goes opposite in direction. The first 3-inch section goes down then the next section goes up and so on.

Hydraulic adjustments make start up adjustment and in-production adjustments very easy. Gauges on the side of the machine easily allow the operator to come back to set starting points.

The bottom picking bank allows the shoulders and back of neck area to be worked before making it to the finisher.



BOTTOM PICKING BANK



| POS. | DESCRIPTION |
|------|--------------------------|
| 1 | Short support with bell |
| 2 | Long support with bell |
| 3 | Transmission support |
| 4 | Motor group (4hp motors) |