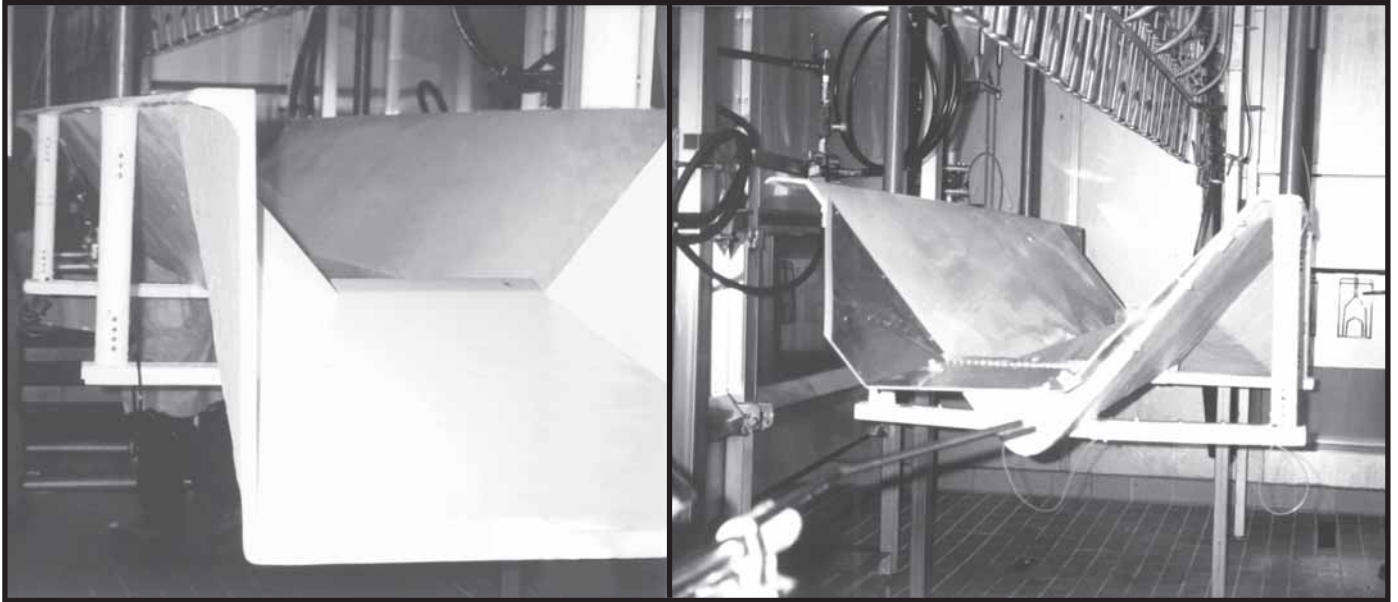


# SF-7002LB PRE-STUNNER FOR LARGE CHICKENS



The **SIMMONS SF-7002LB Stunner** is designed to stun large chickens without crowding. The **SF-7002LB Stunner** uses the same patented combination of high frequency pulsed direct current and low frequency alternating current that has been the distinguishing feature of Simmons stunners for several years. This step-up combination provides a very thorough stun while preventing the damaging effect of the severe muscular contractions normally caused by stunning only with AC. If required, birds can be stunned to the point of cardiac arrest with no resulting product damage. While it is known that stunning with high-current AC can delay the onset of rigor mortis and increase the need for aging prior to boning the breasts, this problem does not occur when birds are stunned with the Simmons technique.

When birds are stunned by the **SF-7002LB** and the **Simmons SK-5 Killer** cuts necks, the relaxed bird bleeds very rapidly and bleeding time is minimized. Research has also shown that the birds can be killed by decapitation with no detrimental effect to feather removal or meat quality.

The **Simmons SF-7002 LB** is not a “water bath” stunner. It has a “direct-contact” stun surface to conduct current through the bird’s head and neck to a grounded shackle. A saline solution is used to wet feathers and skin and thereby aid in conductivity. Let us review with you the latest techniques in stunning and killing, developed to maximize your yield by eliminating damage caused in the kill area.

## SF-7002 FEATURES

---

**A Wide "V"-shaped cabinet** designed especially for large chickens that prevents crowding of birds in the stunner.

**High frequency and low frequency power supplies**, are protected by a tightly sealed fiberglass enclosure.

**Digital display** to indicate stunning voltage and current.

**Electronic salt-water mixing system** to ensure proper concentration and depth control of saline solution.

**Electrically or optional hydraulic controlled height adjustment** for use when changing bird sizes.

**Stainless Steel Guide Bar Kit.**

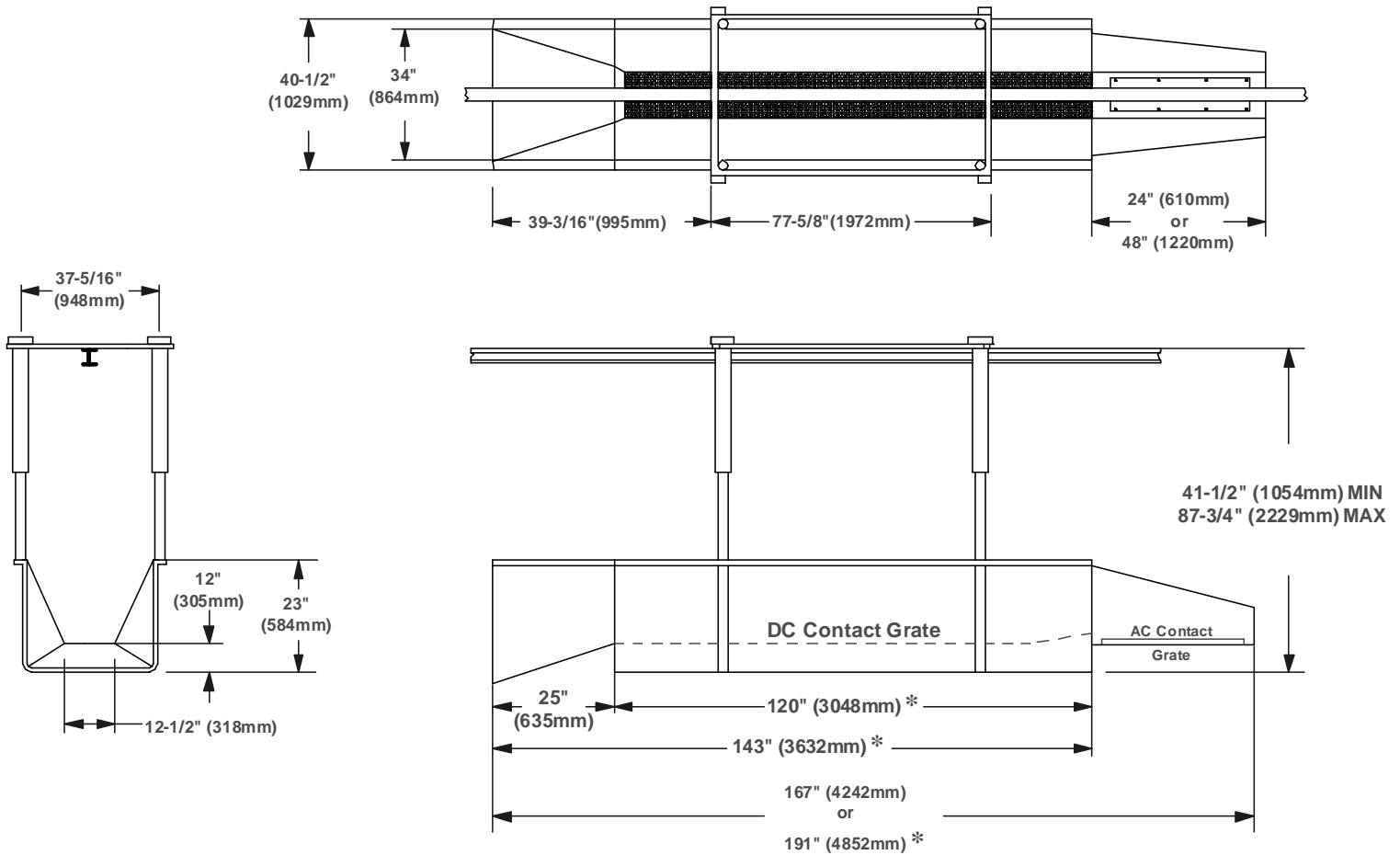
*S E C Incorporated*

*Simmons Engineering Company*



# SF-7002 LB PRE-STUNNER FOR LARGE BIRDS INSTALLATION DIAGRAM

Well-Ventilated, dry location for installation of stunner Electrical Controls  
Dedicated 115V A.C. circuit with 15 amp circuit breaker (or 230V circuit by special order).  
Water supply line - 3/4" diameter.



(\*) By special order, stunner length may be extended by adding 24"(610mm), 48"(1220mm), or 72"(1830mm) sections. Dimensioned from the top of the conveyor line to the contact grate with the cabinet "down". The cabinet is manually adjustable "up" approximately 17 1/2 inches.

**S E C Incorporated**  
Simmons Engineering Company



MIND of MAN

**Simmons Engineering Company**

91 SIMMONS INDUSTRIAL PLACE  
P.O. BOX 546  
DALLAS, GA. 30132  
770-445-6085 FAX: 770-443-9058