

# SF-7001 PRE-STUNNER FOR CHICKENS



## SF-7001 FEATURES

The **SIMMONS SF-7001 Step-up Stunner for Chickens** is the first stunner built that combines the capability of using high frequency current to render a chicken unconscious without the damaging effects of severe muscular contraction and low frequency current to give an irreversible stun, including cardiac arrest if desired. This Step-up technique minimizes carcass and meat quality defects and, when combined with a **Simmons SK-5 Killing Machine**, results in the most efficient bleed-out and prevents a bird from recovery during bleeding. The Simmons **SF-7001**, as is true with all other Simmons Stunners, is not a “water bath” stunner. It has a “direct-contact” stun surface to conduct current through the bird’s head and body to a grounded shackle. A saline solution is used to wet feathers and skin and thereby aid in conductivity. Let us review with you the latest techniques in stunning and killing, developed to maximize your yield by eliminating damage caused in the kill area.

“V” shaped cabinet, which prevents chickens from escaping the stun, while allowing adequate space to prevent wing damage.

**High frequency and low frequency power supplies**, protected by a tightly sealed fiberglass enclosure.

**Electronic Sensor** to ensure positive saline solution depth control.

**Digital display** to indicate stunning voltage and amperage.

**Electrically controlled “Up and down” adjustment** allows for different bird sizes. Optional Hydraulic controls are also available.

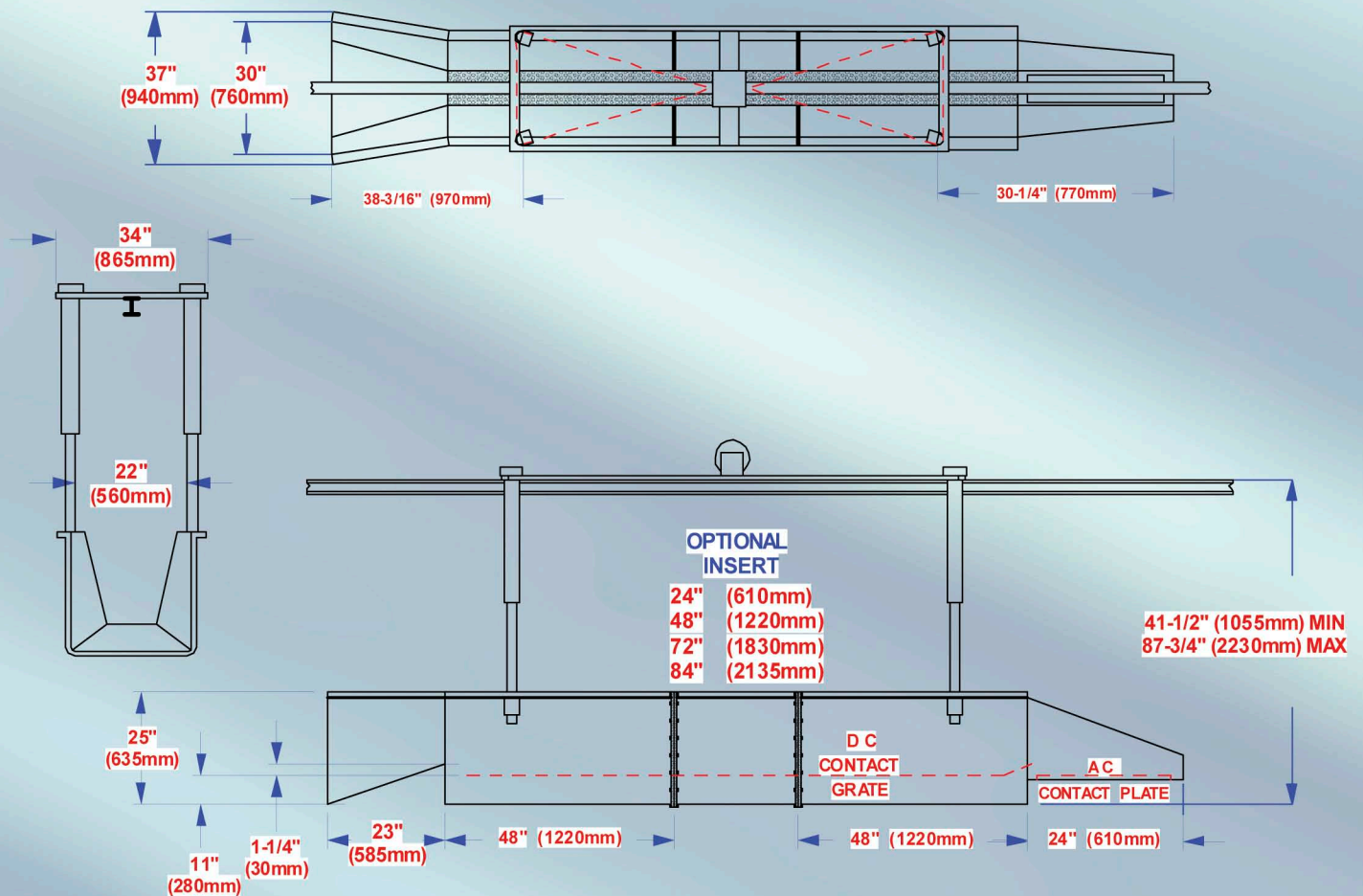
**Stainless steel Guide Bar Kit.**

# SF-7001 PRE-STUNNER

Manufactured by: *Simmons Engineering Company*

## INSTALLATION DIAGRAM

Well-Ventilated, dry location for installation of stunner Electrical Controls  
Dedicated 115V A.C. circuit with 15 amp circuit breaker (or 230V circuit by special order).  
Water supply line - 3/4" diameter.



Dimensioned from the top of the conveyor line to the contact grate with the cabinet "down". The cabinet is adjustable "up" approximately 17 1/2 inches.

**S E C Incorporated**  
Simmons Engineering Company



MIND of MAN



**Equimex**

Web-site: [www.equimex.com](http://www.equimex.com)

Horaplantsoen 20 Tel. +31 318 648 515  
P.O. Box 7001 Fax +31 318 592 201  
6710 CB Ede The Netherlands